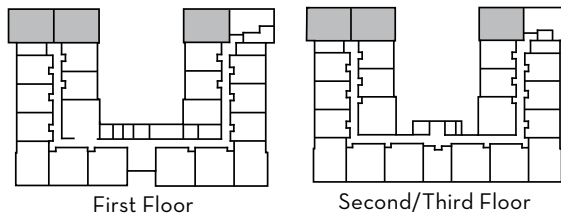


B2 Affordable

- 801 Sq. Ft.
- 2 Bedrooms
- 1 Bath



Building Key



Plans and furnishings are for marketing purposes only, and are not to scale. Please inspect construction, subdivision, utility, landscape and other plans available through leasing center for complete and specific information. Actual locations may vary and items shown or not shown on this place are subject to errors, omissions and field changes.

*All units can be reasonably adapted for handicap accessibility for an extra charge.

THE
LOFTS
AT MONROE PARKE

732.839.3703
625 Spotswood-Englishtown Rd.
Monroe Township, NJ 08831
theloftsatmonroeparke.com